

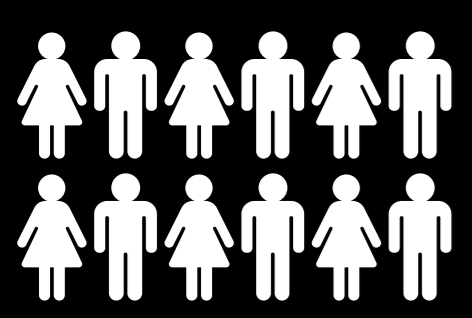


What IS CLIMATE CHANGE?

Changes to the climate, beyond those which are expected naturally, which are caused by human activity – such as burning fossil fuels

Why IS CLIMATE A JUSTICE ISSUE?

Hundreds of leading scientists have said with 95% certainty that humans are the main cause of climate change



95%



50p

2p

5p

20p

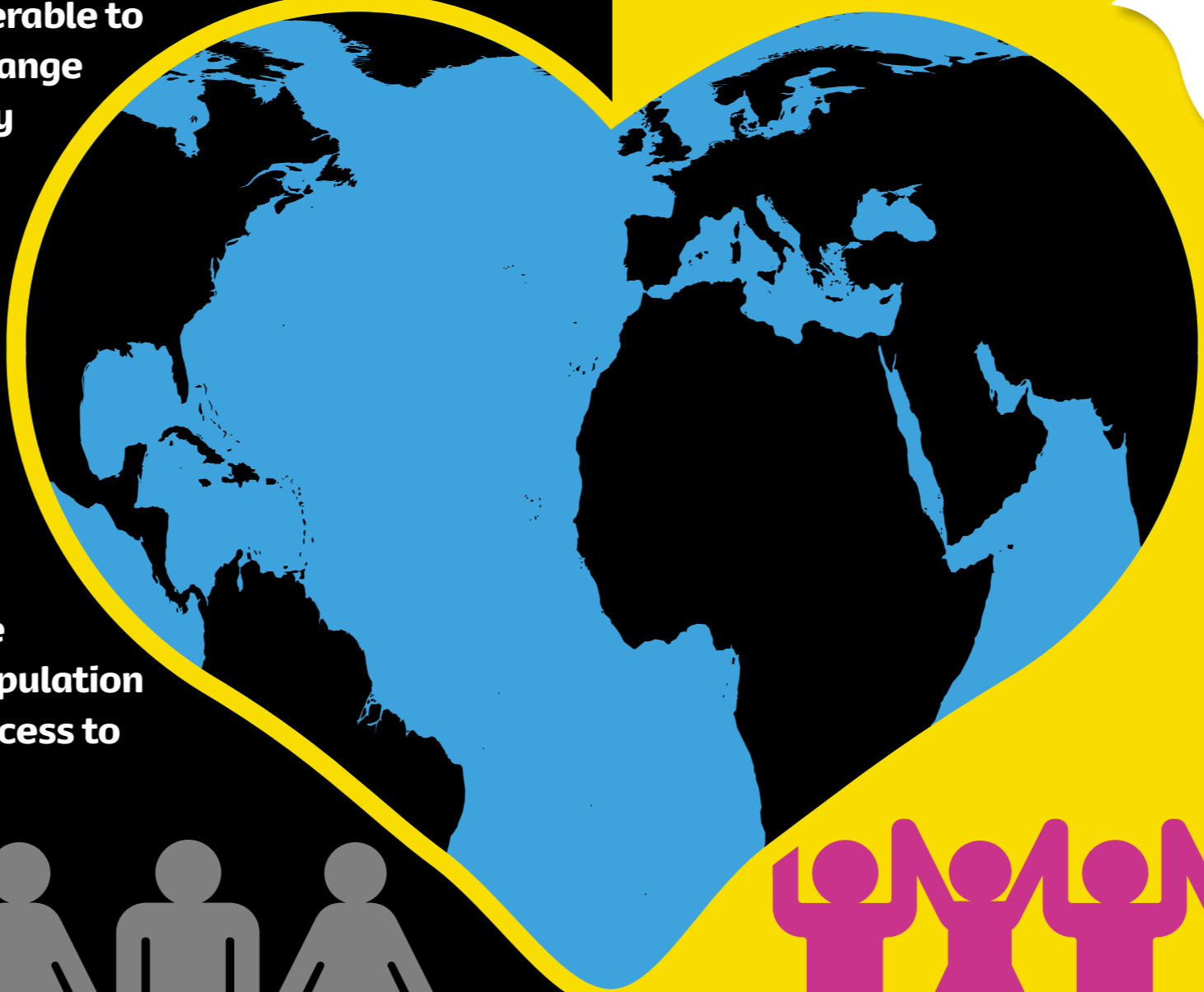
The river has been drying up, which means uncertainty for the food crops

Veronica, 16, Kenya

44% of the people most vulnerable to climate change are already living on less than 77p a day



1 in 5 of the world's population have no access to electricity

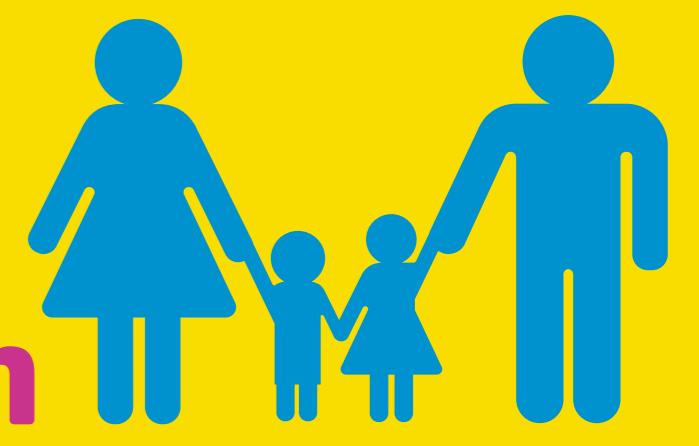


Pope Francis Laudato Si'

Sustainable energy doesn't harm the environment. It is produced by using the power in wind, sun or water – resources future generations can also use.

Why DO WE CARE ABOUT CLIMATE CHANGE?

Love { God people creation



The climate is a common good, belonging to all and meant for all



Together we have the power to tackle climate change 195 countries have agreed to limit temperature rise to well below 2° C

Sustainable energy

can reduce emissions and reduce poverty. It can provide poor communities overseas with:

Light and heat for schools so young people can study safely

Power for water systems to grow crops when there is little rainfall

Fridges so that medicines can be stored safely

Cleaner cooking methods so homes are free from smoke that makes people ill

Play your part!

Learn more

Campaign for politicians to act

Make changes in your own life

Pray

Fundraise

cafod.org.uk

Power and transport

are currently responsible for over 60% of global greenhouse gas emissions



With a 2-3° C temperature rise, over the next 20 years an extra 200 MILLION PEOPLE could be at risk of hunger

The knock-on effect

Changes to our climate can have devastating knock-on effects, starting chains of events that force many people deeper into poverty

For example:

A drought in East Africa 2011-2012

Fewer crops grown

Food prices up by 80% so people could not afford food

Malnutrition and illness increased

Hunger drove people to neighbouring countries

People are more vulnerable to impacts of climate change

Human-caused climate change

More unpredictable and extreme weather

Less access to food, water and healthcare

More conflict and less access to education and jobs

More poverty and injustice

